

- 更经济 MORE ECONOMICAL
- 更安全 MORE SAFE
- 更高效 MORE EFFICIENT
- 更环保 MORE ENVIRONMENTALLY FRIENDLY

中国桥梁施工系统服务商
CHINA BRIDGE CONSTRUCTION SYSTEM SERVICE



咨询热线 | 400-0000-661
Advisory hotline

地址: 浙江省嘉兴市秀洲区新城街道成秀路251号 | 电话: 0573-83972615 | 邮箱: zjxtql@126.com | 网址: www.zjxtql.com
Add: 251 Chengxiu Road, Xincheng street, Xiuzhou District, Jiaxing City, Zhejiang, China. | Tel: 0573-83972615 | Email: zjxtql@126.com | Web: www.zjxtql.com

产品图片仅供参考, 请以实物为准 202309

装配式交通钢桥
Prefabricated Traffic Bridge



临时交通保障解决方案

TEMPORARY TRAFFIC SECURITY SOLUTION

方案概述 | Solution Overview

设计理念

DESIGN CONCEPT

随着城市道路扩建与改造等工程项目日益增加，临时交通保障桥的使用要求越来越高，逐步向永久性桥梁工程靠拢，为此兴土股份研发设计并制造了专用的装配式交通钢桥。其结构安全可靠、承载力高、施工效率高，并具有防滑、减震、降噪、照明等功能。

With the increasing number of urban road expansion and reconstruction projects, the use requirements of temporary traffic security bridges are higher and higher, and they are gradually closer to the permanent bridge engineering. Therefore, Xingtū bridge company has developed, designed and manufactured a special fabricated traffic steel bridge. Its structure is safe and reliable, high bearing capacity, fast construction efficiency, and has the functions of anti-skid, shock absorption, noise reduction, lighting and so on.

适用场景

APPLICABLE SCENARIOS

城市道路扩建与改造等工程项目的临时交通保障

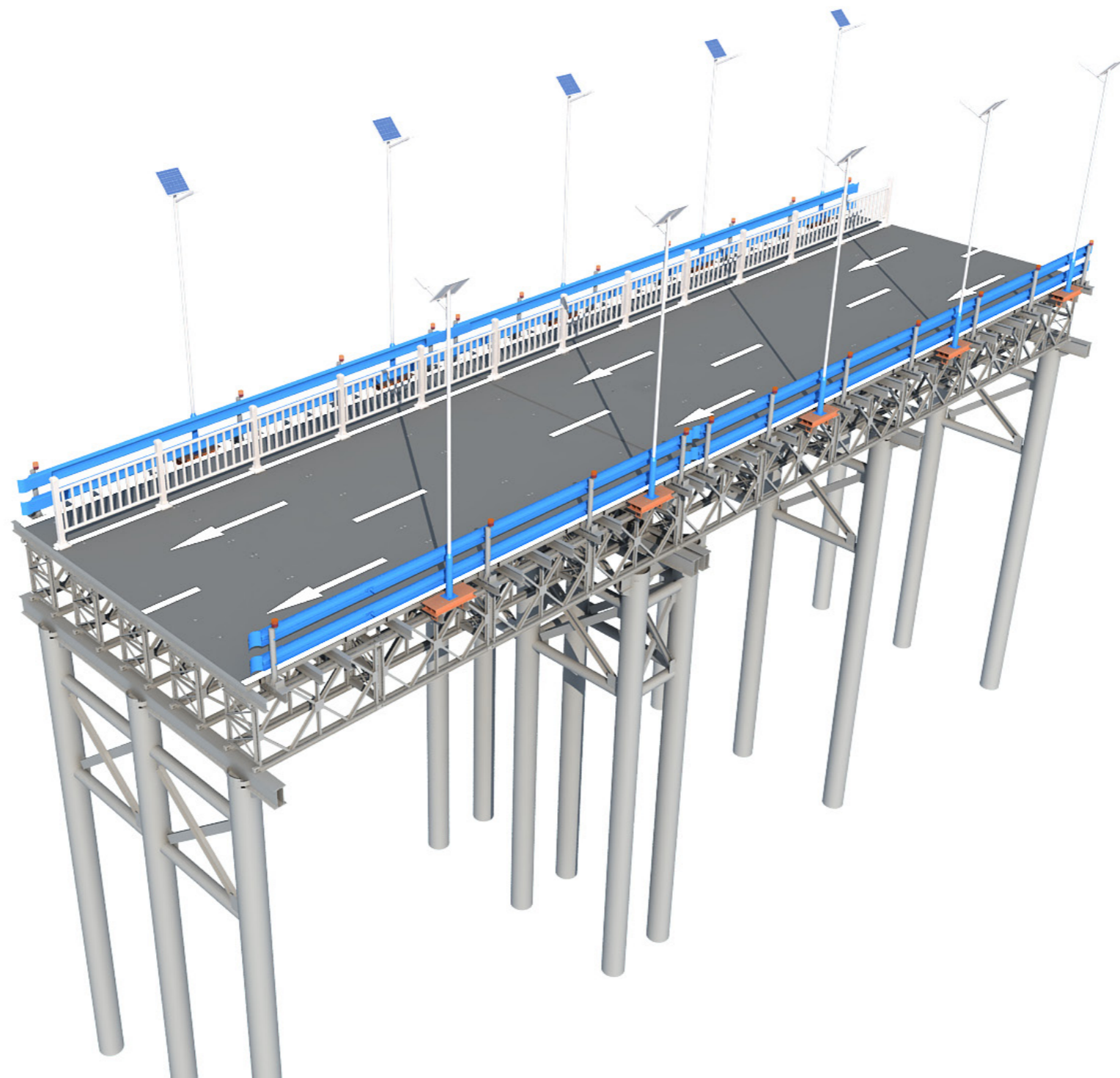
Temporary traffic guarantee for urban road expansion and reconstruction projects

产品优势

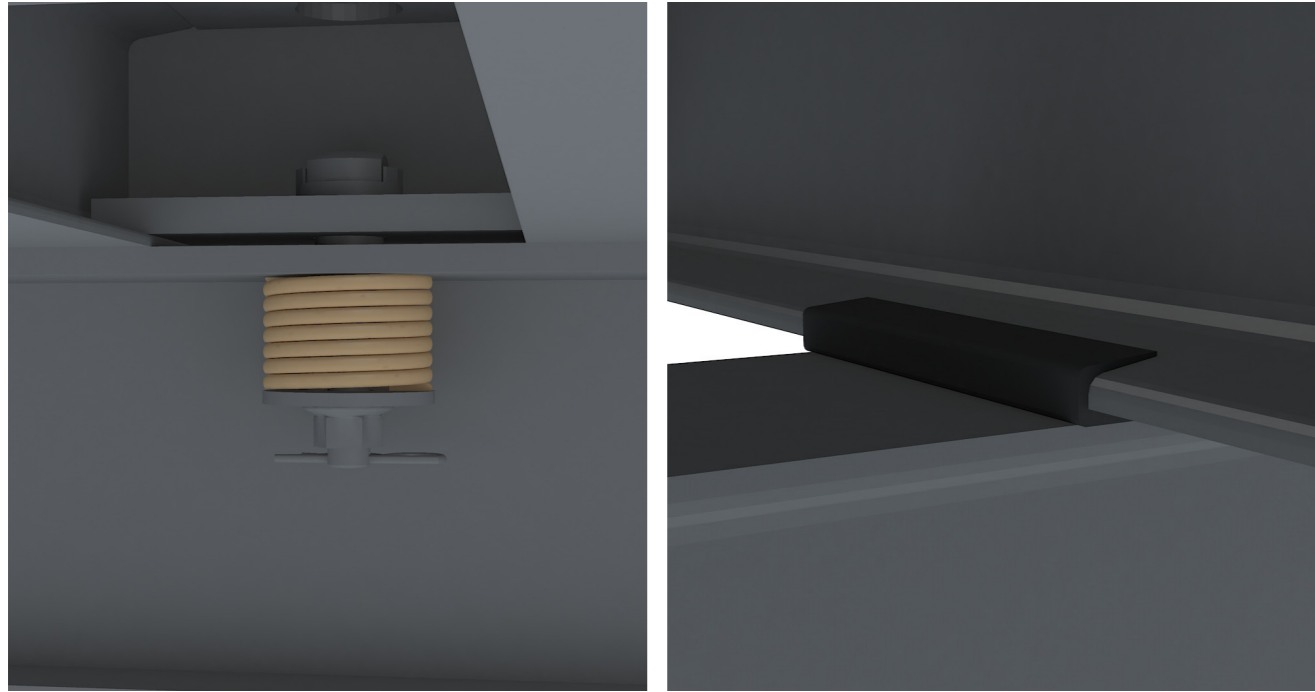
PRODUCT ADVANTAGES

兴土股份通过对装配式交通钢桥的优化改进，使得产品有更好的结构稳定性、更完善的安全措施、更强的通行能力，可适用于大流量道路车辆的通行，车速可达80km/h，突破了对钢便桥水上作业的功能局限性，实现了钢便桥更广泛的应用价值。

Xingtū Bridge Company through the optimization and improvement of prefabricated traffic steel bridge, make the product have better structural stability, more perfect safety measures, stronger traffic capacity, can be applied to the traffic of large flow of road vehicles, the speed can reach 80 km / h, breaking through the functional limitations of steel temporary bridge water industry, and realizing the wider application value of steel temporary bridge.



注:更多工程案例和参数信息,请扫描二维码。
Note: If you want to learn more, please scan the QR code.



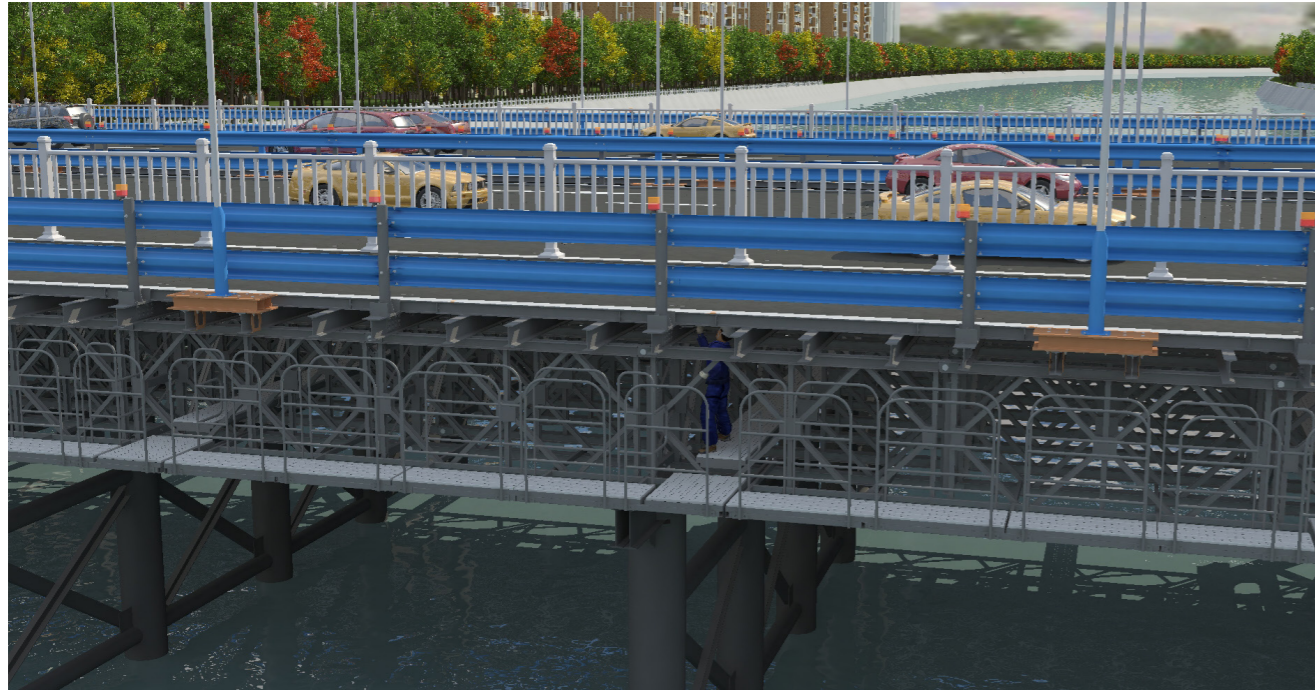
减震减噪：

桥面板与分配梁通过重矩形弹簧和防松螺栓组进行半刚性连接，并且在桥面板与分配梁之间增加橡胶垫起到减少震动与噪音的作用，经测试车辆在行驶过程中噪音小于 70 分贝，对项目周边居民区无影响。



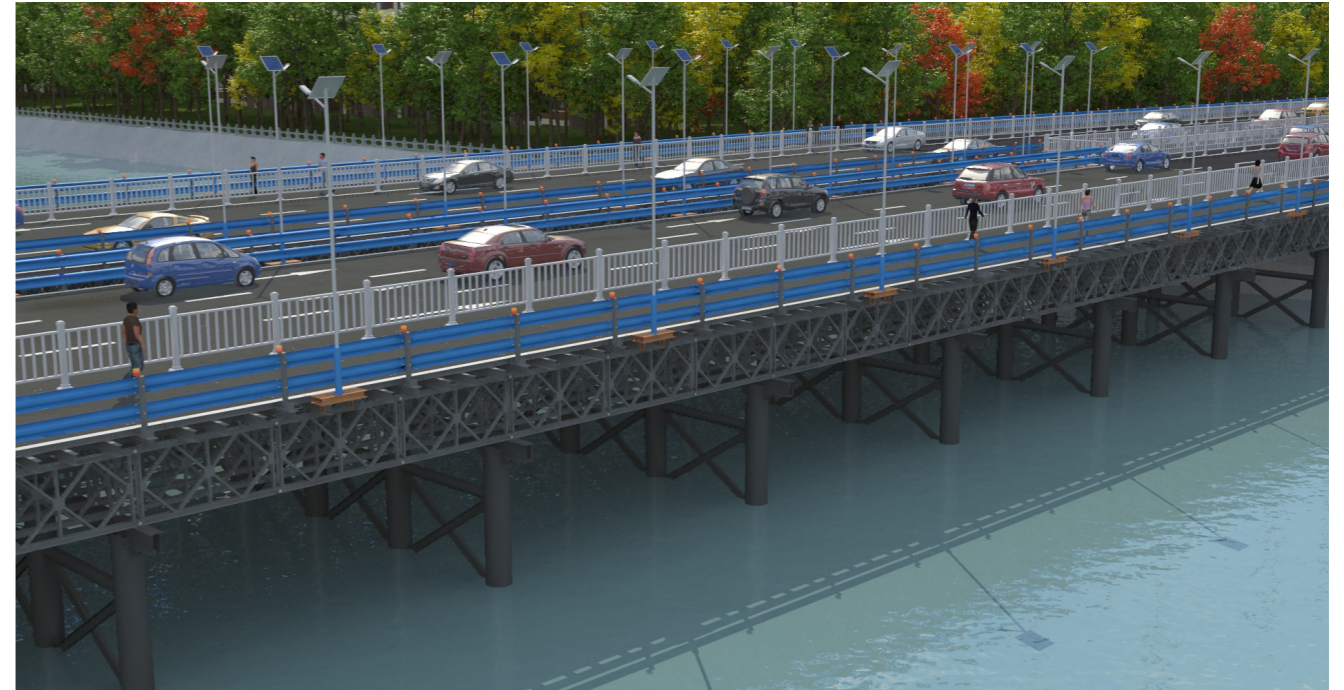
防滑降噪：

桥面板表面涂装了 6mm 的防滑涂层，与普通钢桥面相比抗滑值提升约 4.6 倍，增加车辆行驶时的抓地力，有效降低了车辆在雨雪天气产生横向偏移的情况。同时防滑涂层也有一定的降噪效果，减少车辆行驶时的胎噪，行车体验与水泥路面相差无几。



桥下检修：

交通钢桥所有连接均在桥面下进行施工，所以一旦桥面螺栓有松动情况产生，可在桥下进行维修保养，无需封道，保障了车辆的流畅通行。



安全美观：

桥面两侧设计有波形防撞护栏与太阳能路灯，通过装配式底座与分配梁连接，保证护栏与路灯立柱竖直稳定。桥面两侧外缘设置两排太阳能路钉灯，在夜间时可以起到防护警示的作用，既安全又兼顾美观。



项目名称:杭州轨道交通9号线SG9—8标段



项目名称:杭州地铁10号线一期工程